

1

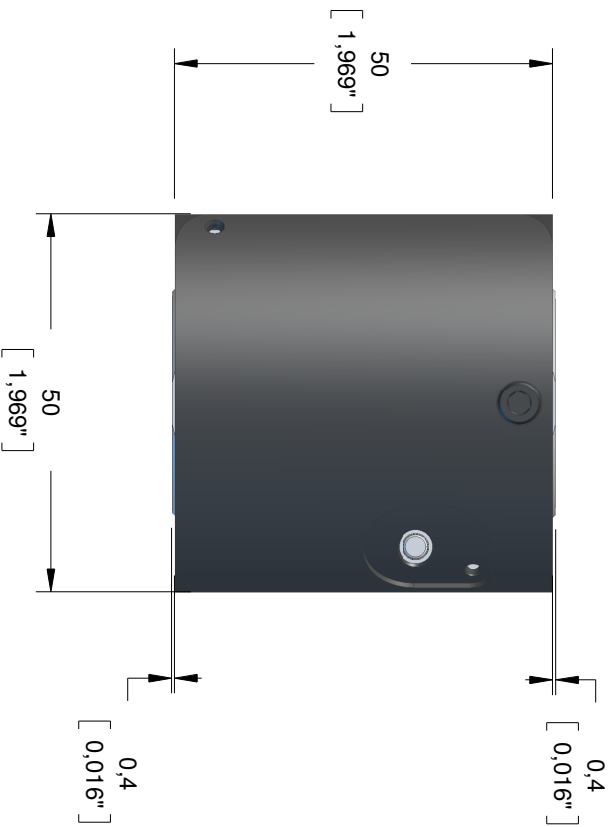
2

3

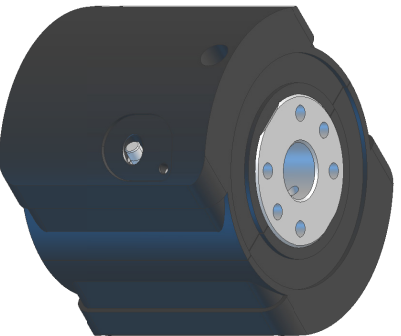
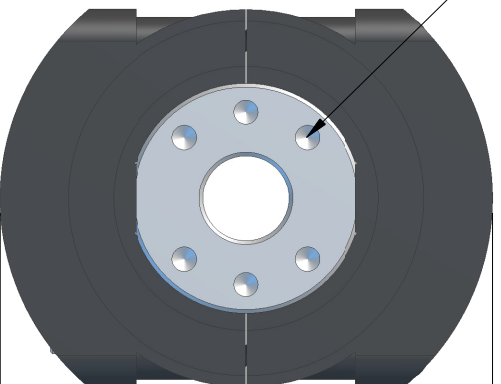
4

TORQUE GAUGE SENSOR WIRELESS

CAPACITY: 0.12Nm / 0.3Nm / 1.5Nm / 6Nm / 12Nm
HEIGHT: 160g
ACCESSORY SQUARE DRIVE: FEMALE □ 1/4, 3/8, 1/2 inch ∇ 0.68]
WIRELESS RANGE: 20m [65ft]
ACCURACY: 0.5%FS



UP & DAWN
 4x UNC-6-32-2B ∇ 6.35[0.25]
 ON 22.9[0.9] EQUALLY SPACED



F

E

D

C

B

A

F

E

D

C

B

A

Rev:	Date:	Description:	Drawn by:	Item:	Ref assembly:	Date of creation:
1	26/10/2018	ORIGINE	Client			

1

2

3

4

Drawn name: DATASHEET
 Assembly name: TORQUE GAUGE SENSOR WIRELESS



Date of creation: