



ANDILOG Technologies
BP62001 - 13845 Vitrolles Cedex 9 – France
Email : info@andilog.com
Web : www.andilog.com
Ph : +33(0)820.888.202 – Fax : +33 (0)820.888.902

Index

| | | |
|--------|------------------------------------|----|
| 1. | Introduction..... | 4 |
| 2. | Installation..... | 5 |
| 2.1. | Software installation | 5 |
| 2.2. | Setting up your gauge..... | 6 |
| 2.2.1. | Centor First..... | 6 |
| 2.2.2. | Centor Easy..... | 6 |
| 2.2.3. | Centor Touch | 7 |
| 2.3. | First Run..... | 7 |
| 2.3.1. | License | 7 |
| 2.3.2. | File location | 9 |
| 3. | Home Windows | 11 |
| 4. | Measure..... | 12 |
| 4.1. | Start | 12 |
| 4.2. | Acquisition..... | 13 |
| 5. | Test Setting..... | 15 |
| 5.1. | Configuration window..... | 15 |
| 5.2. | Output Type..... | 15 |
| 5.3. | Acquisition Mode | 16 |
| 5.4. | Request..... | 16 |
| 5.4.1. | In between each request..... | 16 |
| 5.5. | Spreadsheet and Report output..... | 16 |
| 5.5.1. | Data separator..... | 17 |
| 5.5.2. | After each acquisition..... | 17 |
| 5.5.3. | Report..... | 17 |
| 6. | Tools | 19 |
| 6.1. | Activation..... | 19 |
| 6.2. | General settings..... | 20 |

6.3. Accounts 20

6.4. Maintenance..... 22

7. Exit..... 23

| Rev | Date | Description |
|-----|---------------|----------------------------------|
| 5.0 | March 2014 | Create |
| 5.2 | December 2014 | § 2.3.1 § 3 § 5.4 § 6.4 |

1. Introduction

COMPUTER REQUIREMENTS

RSIC software will need access to certain folders. Before installing the program, please make sure that read and write access is granted. In particular is part of a centrally controlled Windows Domain system, it may be necessary to consult your IT department to allow correct access. Computer running Windows XP, Vista or Seven and one USB (or serial) port are required.

2. Installation

2.1. Software installation

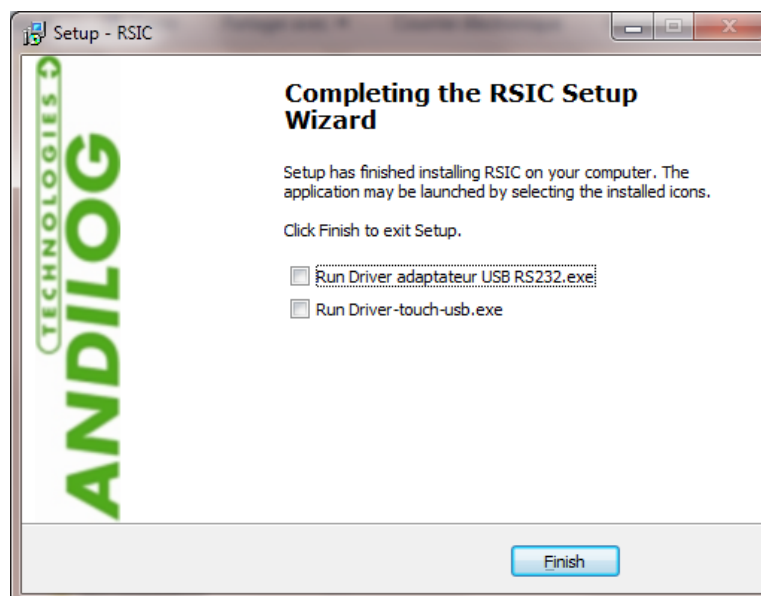
Note: Do not plug cables before ending the setup

1. Insert the installation CD into the computer's CD-room drive.
2. Navigate to the CD-Rom drive
3. Double click the file "Setup RSIC V5_0.exe"
4. Follow the prompts on the screen to install the software

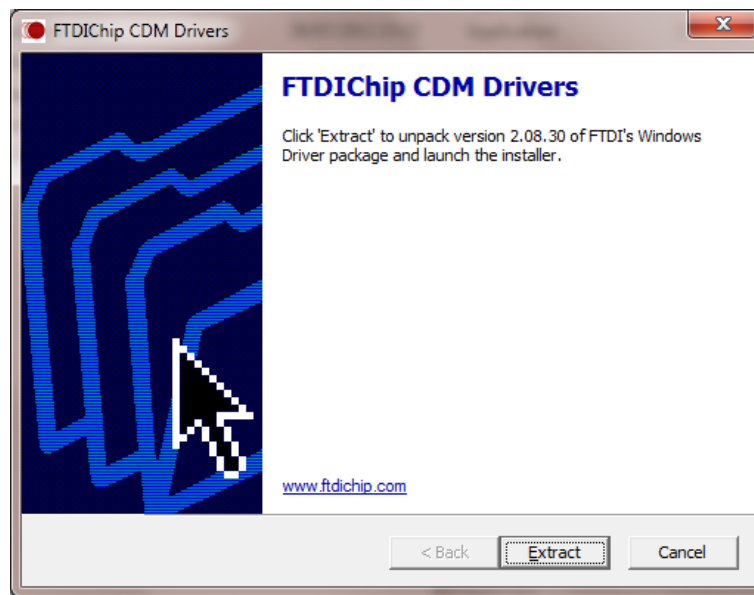
By default, RSIC software will be located under "C:\Program Files\Andilog\RSIC", and the file "Andilog" will be automatically created (if it does not already exist).

Before ending the installation, a popup window asks you to run the drivers use to establish the communication in between your device and computer:

- Check the box "Run Driver adapter USB RS232.exe", and press "Finish", if you have an indirect connection using a RS232 to USB adaptor cable.
- Check the box "Run driver touch-usb.exe" and press Finish, if you have a direct connection (Centor Touch to USB port)



If the following windows prompts on the screen, and click successively on "Extract", "next" and "Finish".



Plug the cable to on the side of your device, and plug the USB end on your computer and lets Windows finishing the installation.

2.2. Setting up your gauge

2.2.1. Centor First

No settings are required.

2.2.2. Centor Easy

Navigate the main menu of your CENTOR EASY, by pressing the « M » key and sets the following menu:

- Menu IN/OUT
 - Anal NO
 - Digi NO
 - RS232 IMP
- Menu RS232
 - Bds 9600 or 19200
 - Par NO
 - Bits 8
 - Stop 1
 - Demand your choice
 - CR NO
 - LF NO

- Sign YES or NO accordingly to your choice
- Unit YES or NO accordingly to your choice
- DatHour NO

2.2.3. Centor Touch

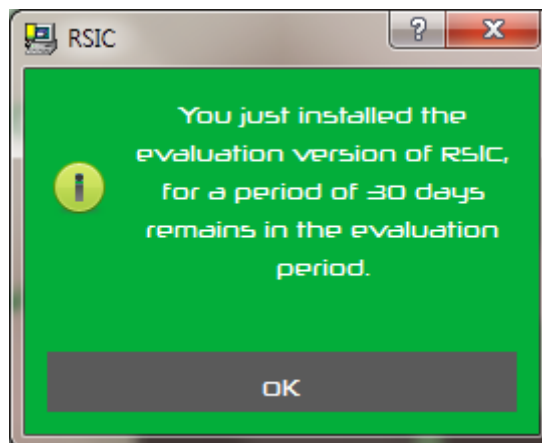
Menu COMMUNICATION and accordingly to your connection type choose the tab: USB or RS; and sets the following menu:

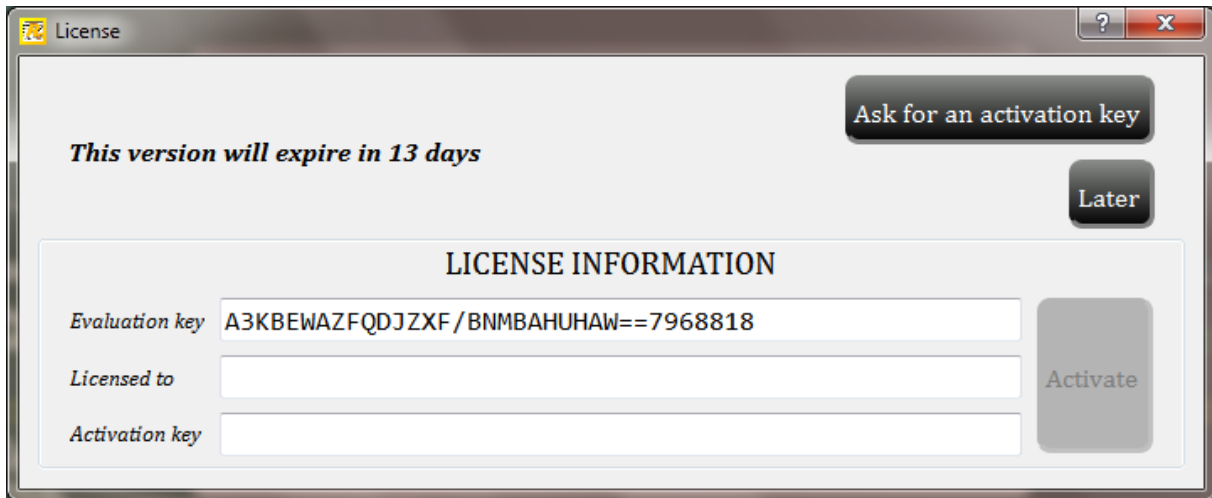
- For RS232 connection :
 - Speed = 9600 or 19200
 - Parity = None
 - Stop = 1
 - Bits = 8
 - Send = accordingly to your choice
- For USB connection :
 - Type = Demand 1 or Demand 2, accordingly to your choice

2.3. First Run

2.3.1. License

Run RSIC by clicking the icon button “RSIC” located on your destock. For the first run, the software will display a dialog box containing information on your license validity period of time.





When you start RSIC you have the opportunity to contact us and ask for your activation software key, in order to switch from the “trial” to “final” license software. You can also access to this windows under the mnu “TOOLS”>”Activate”.



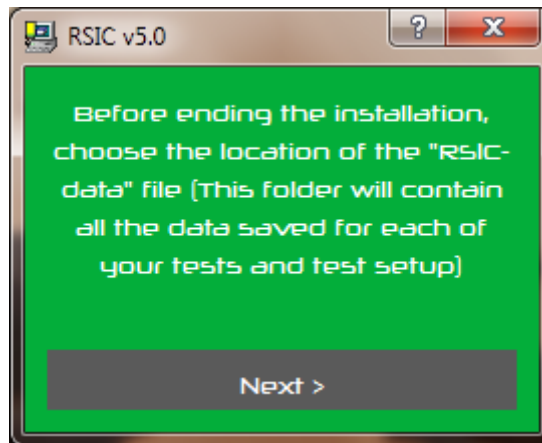
You have three different ways to ask for a license:

- **The internet:** Centor Manager will check online when it starts if you have a license available. If it finds your license, Centor Manager will install it automatically.

- **Email:** Centor Manager will automatically prepare an email with the required information to activate your software. You just have to send it. You will receive by email your license information once it is validated.
- **Mail or fax:** You can print your license information and mail it or fax it to Andilog.

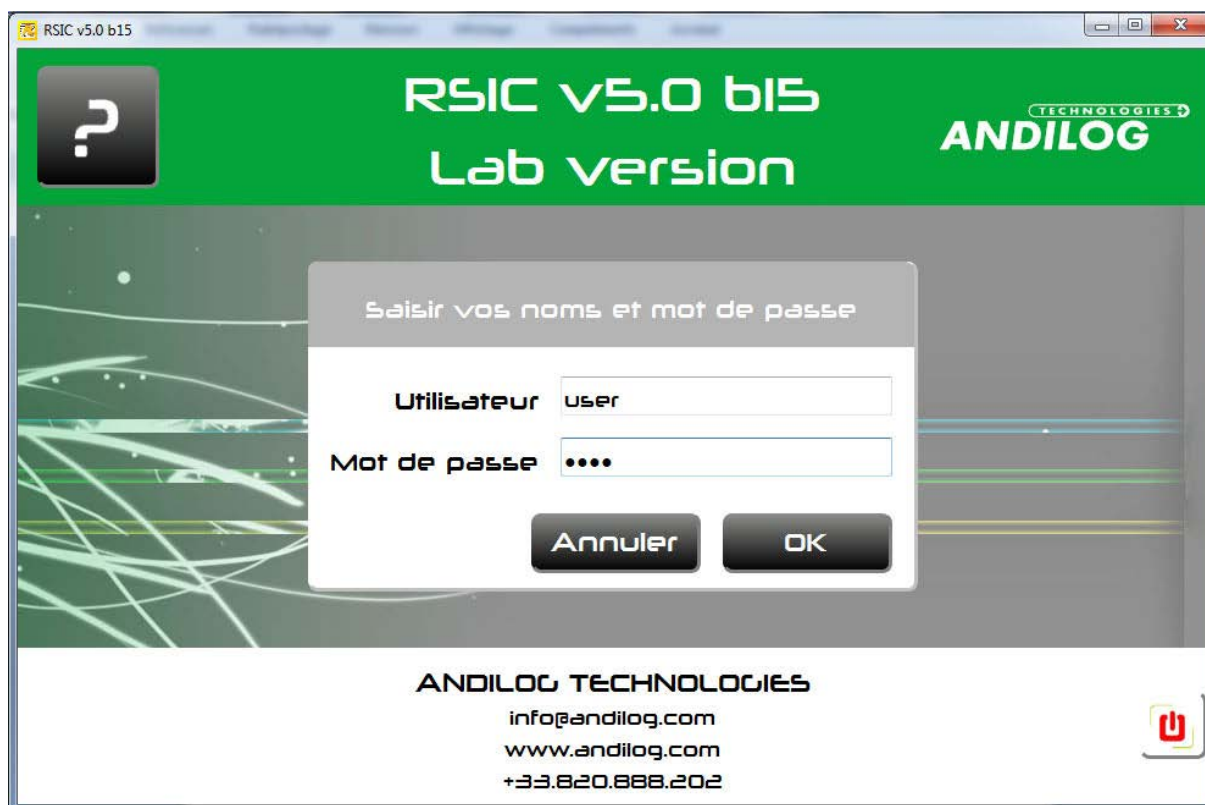
2.3.2. File location



When RSIC is started the first time, a dialog box is displayed requiring choosing the location of the “**RSIC_Data**” file. This folder will contain all the data saved for each of your tests and test setup you create. We **DON’T** recommend using “Program File” folder location or one of its sub-folder; as it may cause interaction issues with the software RSIC, even if you are administrator on your computer



Then RSIC software will require you to enter a user login and password.

Note: By default the login and password are: “admin” and “admin”. Please refer to the next paragraph to create or modify a user account.



-  Open the operating manual
-  Home menu

3. Home Windows

Once identified, you access the main menu of RSIC software:



From this window, you can run your data acquisition.



You generate your test configurations, if you are logged with an administrator account.



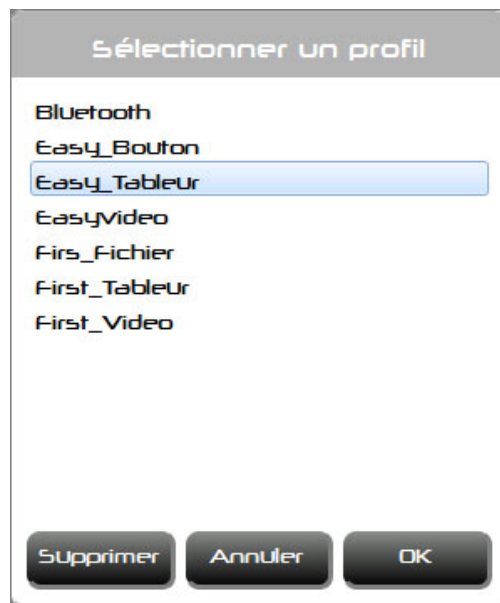
This menu includes four options:

- **Activation** : allows you to activate your license
- **General Settings**: language, storage files...
- User/Administrator **accounts** management
- **Maintenance** : understand and troubleshoot connection issues
- **Update**: You can check here if an update is available for Caligraph. This feature required an internet access and you must be an administrator of the software

4. Measure

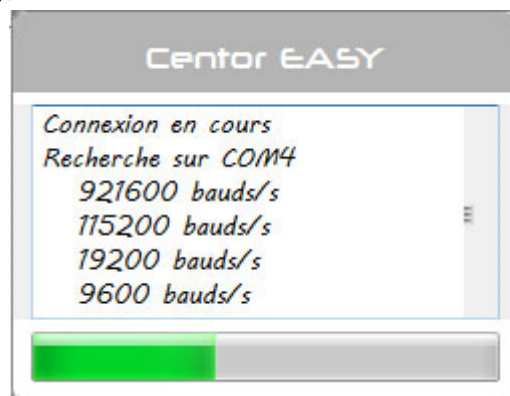
4.1. Start

RSIC software will display the library of saved “profile” available, select the required profile under which you want to run your test by clicking on it, and then click on “OK” button. The most recently used profile is picked by default. (If only one profile is available, this windows does not display)

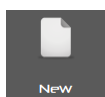


Only an Administrator account is allowed to delete a profile. This action will not delete data that have been run using this profile.

Then, if it is not done already, the software establishes the connection whit your gauge:



4.2. Acquisition



New

Clear the windows and start a new backup file. If the last acquisitions have not been saved, a message appears prompting you to save



Launch

Start an acquisition.



Start

Start a periodic acquisition.



Stop

Stop a periodic acquisition.

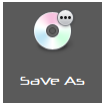


Save

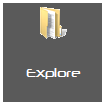
Save acquisition shown on the screen under a file whose name will consist of that specified in the « file name » field followed by, depending on the output :

- File: date and hour '_YYMMDD_HHMMSS' and the extension 'txt'.
- Spreadsheet: date and the extension 'xls' or 'xlsx'. The Hour is used to name the worksheet.
- Report: date and hour '_YYMMDD_HHMMSS' and the same extension as the report template. .

As long as you do not click « New », the following acquisitions will be stored after the current files or workbook.



Store the acquisition under a different file name.

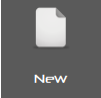
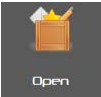

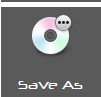
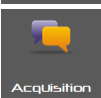
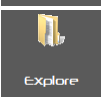


Open a browser of the directory where the acquisitions are stored.

5. Test Setting

5.1. Configuration window



| | |
|---|--|
|  | Create a new profile. Select the type of device : Centor FIRST, Centor EASY, Centor TOUCH |
|  | Open an existing profile. The last profile used is picked by default. |
|  | Save a profile. |
|  | Save a profile under a different name |
|  | Open the acquisition window. When creating a new configuration, this button is inactive until you first save it. |
|  | Open a browser of the directory where the acquisitions are stored. |

5.2. Output Type

You can store your data under the following format:

- Text : data are stored sequentially in a text document
- Spreadsheet: data are stored in a spreadsheet, which allows you to easily generate graphs.
- Report: data are included in a spreadsheet based on a preset report template.

A generic file name is used for the folder under which your acquisitions are saved. Its names can be changed under the acquisition window.

5.3. Acquisition Mode

Three modes are available and determine what triggers each acquisition. With a Centor FIRST device only the acquisition by button is available.

If you are using a periodic acquisition, make sure that the choose period is long enough for the device to send all the data. This period time depends on your device and communication speed.

5.4. Request

For the acquisition mode « computer key » and « gauge key », the type of data which you want to collect must be selected. Uses the two arrows positioned in between « selection » and « available » to move a request from one dialog box to the other. You can also double click on the request.

The arrows positioned on the right of the “selection” move up and down the selected request on the list.

5.4.1. In between each request

If several requests have been selected, you can choose how they must be displayed.

For a Text output mode, column change is materialized by a tab.

5.5. Spreadsheet and Report output

The format « spreadsheet » and « report » have a third settings window:

Spreadsheet

Start cell

Number of columns

Number of rows

Line break

Column break

Séparateur de réponses

None

Column

Row

After each acquisition

Change column

Change row

The output « report » as an additional field:

Report

Report name 

5.5.1. Data separator

When data contains one or more spaces, you can « cut » them out by replacing each space with a change of column or row. This is useful for curves which contains two values separated by a space.

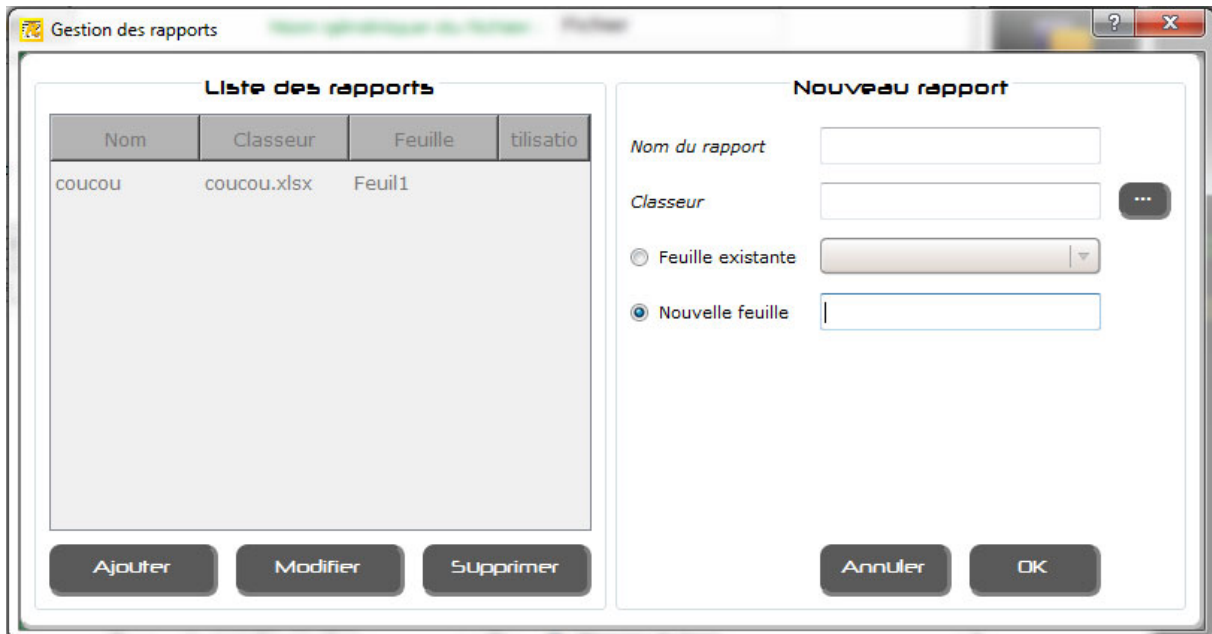
5.5.2. After each acquisition

Define the action that needs to be done once the data has been transferred.

5.5.3. Report



Reports management: add, modify, delete.



A report is defined by a name, an Excel workbook and an existing spreadsheet or a new one.

The left dialog box displays the existing report. For each ones the configuration used is shown. A report can't be deleted if a configuration is using it. .

The right dialog box allows you to create or modify a report.

When a workbook is selected, a copy is made locally and it is this copy that is then used.

6. Tools

6.1. Activation



You can access this window only if you are running under a trial version.

6.2. General settings



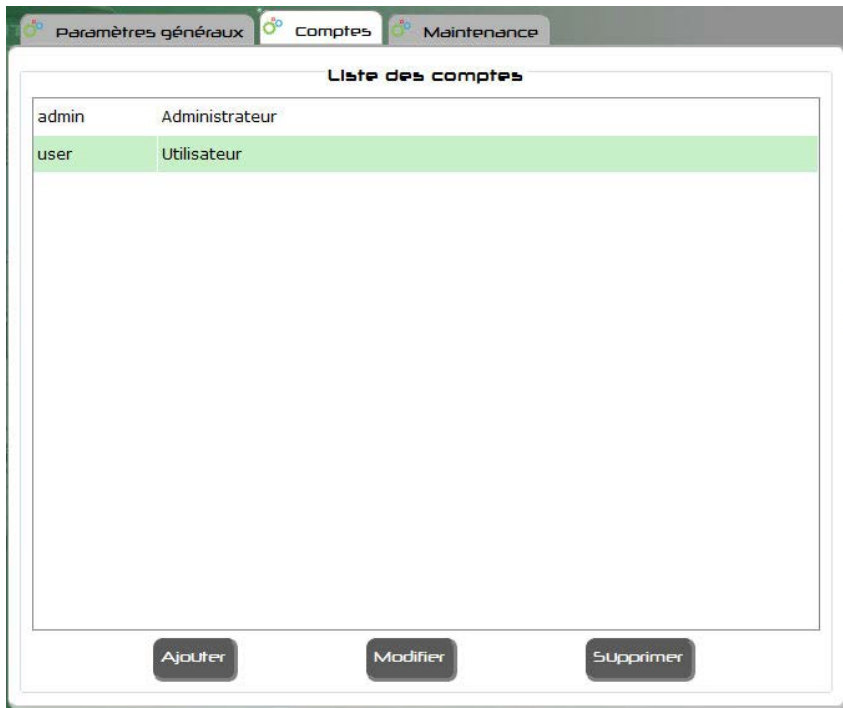
- You can select the language.
- The storage folder where your configuration and acquisitions are saved. You can change it.
- Your company contact details, can be recalled on your report template.
- License type : « trial » or « final version » .

Each change on this dialog box saves automatically.

6.3. Accounts

RSIC software has two levels of account: “[user](#)” (restricted access) and “[administrator](#)” (unlimited access).

An operator login saved as “user” will be not able to access to the following options: “Create/modify a profile”, “delete a profile”, however he will be able to access to the “account setting” in order to modify its password.

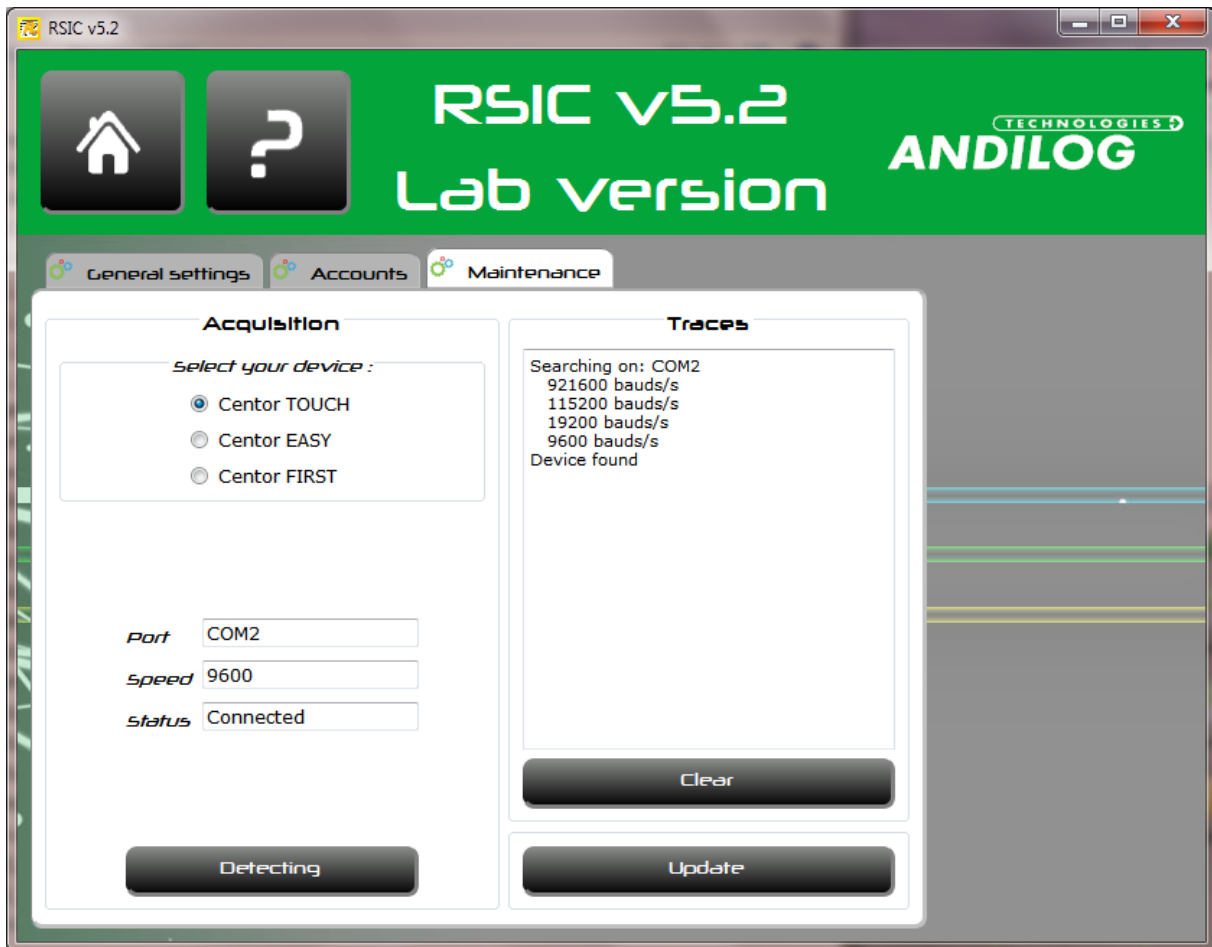


The accounts dialog box display all accounts, users and administrators, unless you are logged as a user and so only user's account are displayed.

As an administrator you can:

- Create an account
- Modify an existing account
- Delete an account, except the one with which you are connected

6.4. Maintenance



This dialog box will give you more information on the communication setting with your device.

First select the type of device, and then press “Detecting”. RSIC will scrutinize the available COM port on your computer at different rates to locate your device. If you have a Centor FIRST device, you shall be asked to press the pedal.

Pressing “Clear”, will erase the traces.

Press “Update” to check if an update is available for Caligraph. This feature required an internet access and you must be an administrator of the software

7. Exit



By existing the RSIC software, the communication with your device will automatically stopped.